

**DIGITAL  
CRAFTSMEN**

---

**OPEN DATABASE  
AN INTRODUCTION**





## Process

- We ask some of you to share your needs and discuss our proposition.
  - A template to fulfill a project
  - The help section of the DB to look up how-to's





## Overview features

- The DB consists of :
  - a world map with project pinpointed
  - a search menu with the following items:
    - Filter by country (fixed/drop-down) Or
    - Filter by program (fixed/drop-down) Or
    - Filter by language (fixed/drop-down) Or
    - Search for keywords (search) Or
    - Advanced search

**SEARCH RESULT** : The result will be a combination of all search criteria to avoid the risk of not having a result.

**EXAMPLE:** if the search is: Belgium - Viasano - Dutch - Children, you will have a result based upon all these parameters.







## Simple search

Consists out of filters which are **fixed** drop down menus to limit the search results upfront



## Advanced search

An advanced search contains these items:

- Target group
- Settings
- Themes
- Resources
- Communication tools

To be selected by radio buttons for easy use



## The Map

The map is used to **pinpoint the projects** around the world in an quick overview. You can use the + and - signs to determine the zoom level.

Next to that, you can

- **Drag and scroll** with your mouse to navigate through the map
- **Cluster** the projects to have a better view when a lot of projects will be in the DB



## Keywords

You can enter keywords by typing and pressing spacebar or enter. The search results will be more specific if keywords are entered.



## The back-end Functionalities

- Log-in system
- User management system
- Create and manage projects



## The back-end Log-in system

Within the DB we have foreseen a log-in system with 3 main functionalities :

1. [Add user](#) (Only for Open admin & Program - admin)
2. [Edit Password](#) (for every user)
3. [Reset password](#) (for every user)



## The back-end

### User management

User management is managed on 4 different levels:

- Level 1 : Public visitor
- Level 2 : Open DB admin
- Level 3 : Program admin
- Level 4 : Contributor

## Level 1 : Public visitor

A **public visitor** can:

- Access the DB to consult the available projects through the search functionality
- Download documents within the available projects



## Level 2 : Open DB admin

A **Open DB admin** can:

- [Add programs](#)
- [Allocate an admin to a program](#)
- Create contributors
- Change user credentials for all users
- Delete program admins
- Delete contributors
- Add projects in all programs
- Make changes on all projects
- Remove projects from all users

## Level 3 : Program admin

A **program admin** can:

- Create users within his own program group
- Add projects
- Change his own projects
- Remove his own projects
- Changes on other projects within his program group
- Remove projects within his program group

## Level 4 : Contributor

A contributor can:

- Create projects in a specific program group
- Change his own projects
- Remove his own projects

## Conclusion

As a Open Admin you have all rights within all programs and projects.  
As a Program admin you have all rights within your programs  
As a Contributor you have rights for your own projects

=> Your rights **are controlled on a program level**. If there is a problem, you can always contact the **Open Admin Janne**



# Projects

## How does it work

Adding , changing and removing projects

- Access is defined by your role within the platform.

### ROLES

- The **Open DB admin** can add, change and edit all projects. Also the ones he didn't create.
- A **program-admin** can add, change and edit all projects within programs created by himself or one of the contributors
- Within the program a **contributor** can add, change and edit projects to which he has access

# Projects Demo's

## Create project

The screenshot shows a web form titled "Create Project" with a dark green header. The form is divided into several sections, each with a title and a text area for input:

- Project Name:** A text input field with a placeholder "Name".
- Content:** A large text area with a placeholder "Content".
- Start Date:** A text input field with a placeholder "Start Date".
- Duration:** A text input field with a placeholder "Duration".
- Message:** A text input field with a placeholder "Message".

Each section has a small toolbar with icons for undo, redo, and other editing functions. The form is set against a background image of a forest.

## Change project

The screenshot shows a web form titled "Edit Project Final Project" with a dark green header. The form is divided into several sections, each with a title and a text area for input:

- Project Name:** A text input field with a placeholder "Name".
- Content:** A large text area with a placeholder "Content".
- Start Date:** A text input field with a placeholder "Start Date".
- Duration:** A text input field with a placeholder "Duration".
- Message:** A text input field with a placeholder "Message".

Each section has a small toolbar with icons for undo, redo, and other editing functions. The form is set against a background image of a forest.







## Analytics

### What do we track

We track the following statistics:

- user analytics through Google analytics: Site level : What page is visited, how many times is a page visited, ...
- DB analytics : Database level : How many logins are done by a user. How many projects did someone create.
- => EXAMPLE : YOU CAN CHECK WITH JANNE HOW MANY TIMES YOUR PROJECT PAGES ARE VISITED.

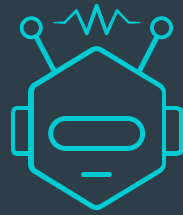


## Next steps

- Go live on OPEN website end of next week.
- On Monday program administrators will receive a link with their login credentials.
- Start creation of contributors by the program admins once they received their login.
- Upload as much projects as possible to feed the database by program administrators and contributors within the month of October.
- In November the link will be available through the EIN website.







**DIGITAL  
CRAFTSMEN**





# EPODE Open Platform



Sharing community-based approaches  
for the prevention of childhood obesity

[Simple search](#)

[Return](#)

# EPODE Open Platform



Sharing community-based approaches  
for the prevention of childhood obesity

[Advanced search](#)

[Return](#)

# EPODE Open Platform



Sharing community-based approaches  
for the prevention of childhood obesity

Map usage

[Return](#)

# EPODE Open Platform



Sharing community-based approaches  
for the prevention of childhood obesity

[Add user](#)

[Return](#)

# EPODE Open Platform



Sharing community-based approaches  
for the prevention of childhood obesity

[Edit password](#)

[Return](#)

# EPODE Open Platform



Sharing community-based approaches  
for the prevention of childhood obesity

[Reset password](#)

[Return](#)

# EPODE Open Platform



Sharing community-based approaches  
for the prevention of childhood obesity

Add program (only for Open-admin)

[Return](#)

# EPODE Open Platform



Sharing community-based approaches  
for the prevention of childhood obesity

Add user to program (Only for Open-admin & Program admin)

[Return](#)



# EPODE Open Platform



Sharing community-based approaches  
for the prevention of childhood obesity

[Create project](#)

[Return](#)

# EPODE Open Platform



Sharing community-based approaches  
for the prevention of childhood obesity

Change project

[Return](#)